

48

STATE OF FLORIDA  
COUNTY OF PALM BEACH  
THIS PLAT WAS FILED FOR  
RECORD AT \_\_\_\_\_ M.  
THIS \_\_\_\_\_ DAY OF \_\_\_\_\_  
A.D. 20\_\_\_\_ AND DULY RECORDED  
IN PLAT BOOK \_\_\_\_\_ ON  
PAGES \_\_\_\_\_ AND \_\_\_\_\_

SHARON R. BOCK  
CLERK AND COMPTROLLER

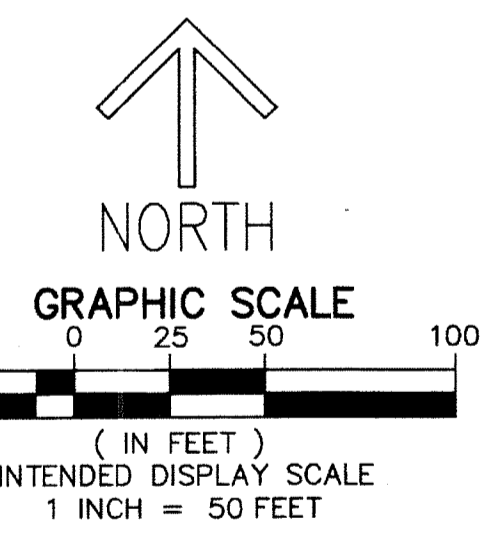
BY: \_\_\_\_\_  
DEPUTY CLERK

SHEET 17 OF 18

**PALM MEADOWS ESTATES**  
A PLANNED UNIT DEVELOPMENT  
BEING A REPLAT OF PARCEL A, PARCEL B, TRACTS A, B, C, D, L-1, L-2 AND L-3,  
PALM BEACH THOROUGHbred TRAINING FARM, ACCORDING TO THE PLAT THEREOF,  
AS RECORDED IN PLAT BOOK 96, PAGES 164 THROUGH 171, OF THE PUBLIC RECORDS OF PALM BEACH COUNTY, FLORIDA,  
LYING IN SECTIONS 17, 18, 19 AND 20, TOWNSHIP 45 SOUTH, RANGE 42 EAST, PALM BEACH COUNTY, FLORIDA.

SHEET 15	SHEET 16	SHEET 17	SHEET 18
SHEET 11	SHEET 12	SHEET 13	SHEET 14
SHEET 9	SHEET 10	SHEET 11	SHEET 12
SHEET 7	SHEET 8	SHEET 9	SHEET 10

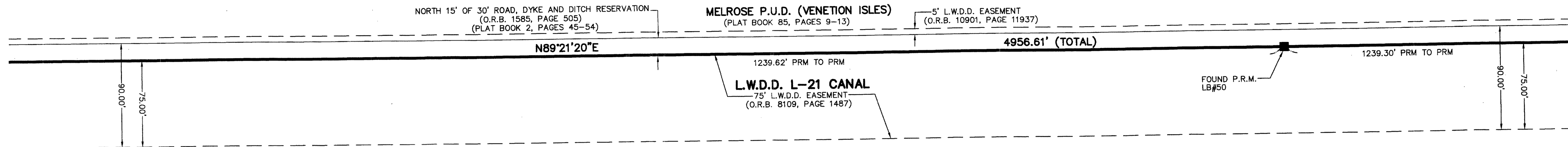
↑ NORTH  
SHEET INDEX  
NOT TO SCALE



Δ=163705'19"  
R=267.24'  
L=760.68'  
CB=N09°09'23"W  
CD=528.67'

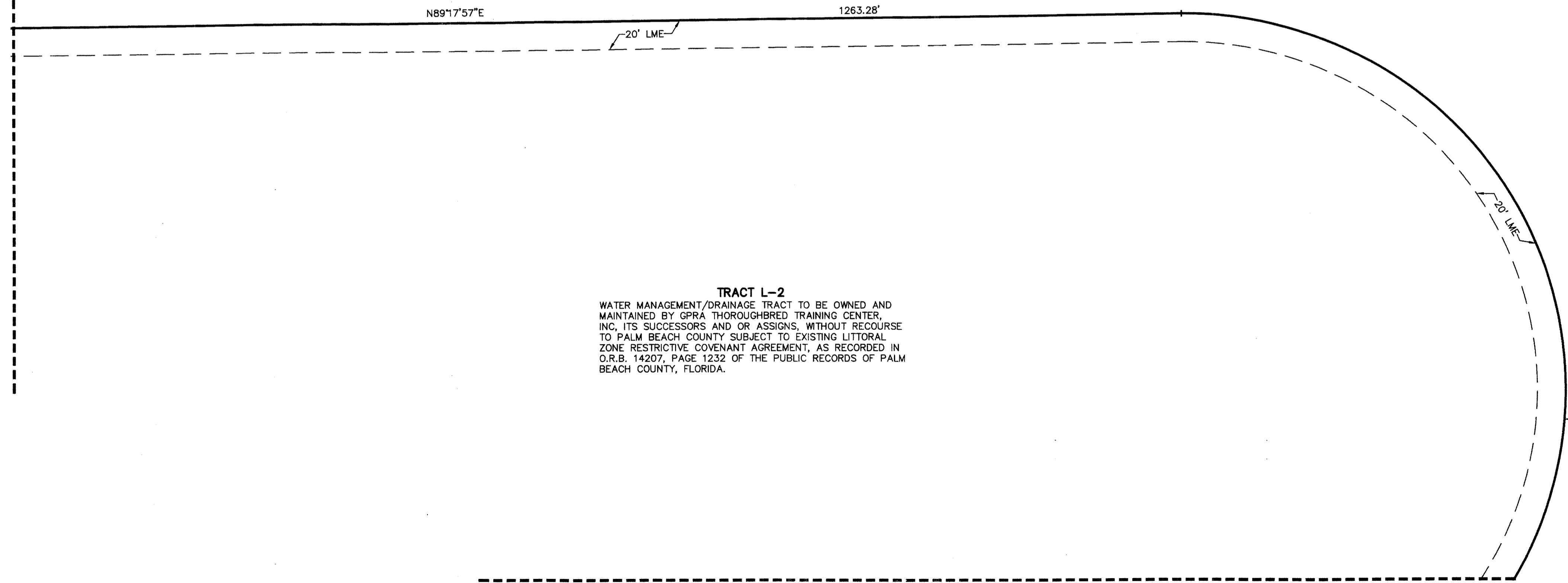
THIS INSTRUMENT PREPARED BY  
DAVID P. LINDLEY  
OF  
**CAULFIELD and WHEELER, INC.**  
SURVEYORS - ENGINEERS - PLANNERS  
7900 GLADES ROAD, SUITE 100  
BOCA RATON, FLORIDA 33434 - (561)392-1991  
JULY - 2014

0854-001



MATCH LINE SHEET 16 OF 18

MATCH LINE SHEET 18 OF 18



MATCH LINE SHEET 13 OF 18